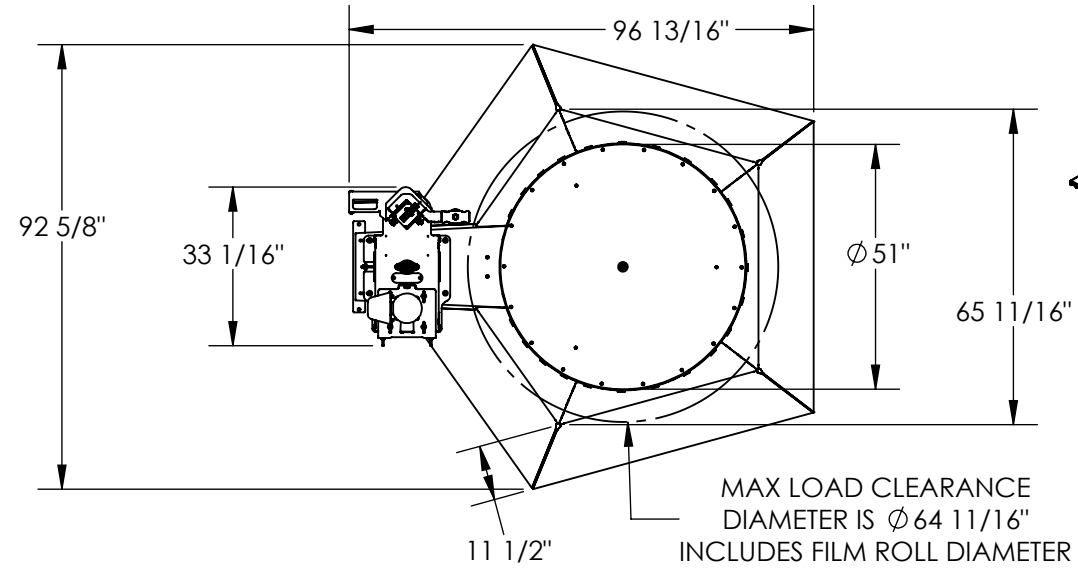


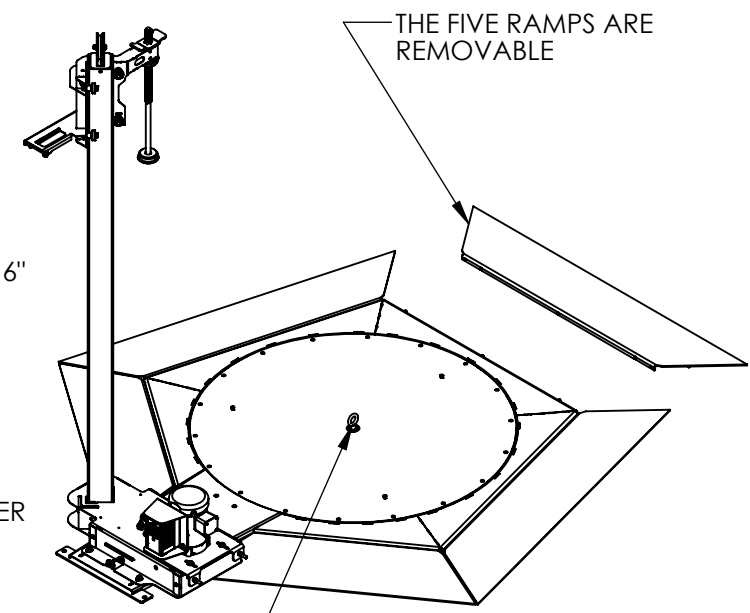
SEMI-AUTOMATIC STRETCH WRAP MACHINE - SWA-51-AR5

APPROX WEIGHT: 722.03 lbs.
DOES NOT INCLUDE WEIGHT OF POWER OR PACKAGING!!!

*** ANY ADDITIONS, DELETIONS, OR OMISSIONS MUST BE CORRECTED ON THIS DRAWING AS THIS DRAWING WILL BE CONSIDERED ALL INCLUSIVE ***
ALL GRAPHICS PROVIDED ARE FOR REFERENCE ONLY. IF CERTAIN DIMENSIONS ARE CRITICAL PLEASE VERIFY THOSE DIMENSIONS WITH YOUR SALESPERSON



MAX LOAD CLEARANCE
DIAMETER IS Ø 64 11/16"
INCLUDES FILM ROLL DIAMETER



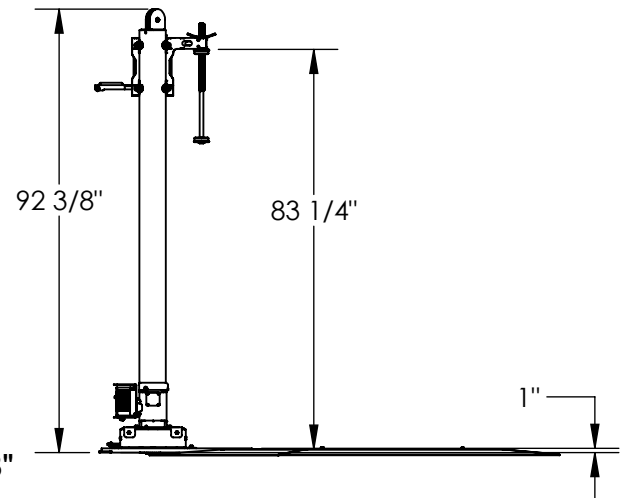
3-D VIEW FOR REFERENCE

EYE BOLT USED FOR LIFTING
ONLY. IT MUST BE REMOVED
FOR MACHINE OPERATION

DIMENSION TOLERANCE ± 1/4"

POWER SPECIFICATIONS

AC POWER
MOTOR VOLTAGE: 115V
MOTOR PHASE: SINGLE
CONTROL: FOOT



STANDARD FEATURES

MODEL NUMBER: SWA-51-AR5
CAPACITY: 4000 LBS
TURN TABLE DIAMETER: 51"
TURN TABLE DECK HEIGHT: 7/8"
OVERALL LENGTH: 96 13/16"
OVERALL HEIGHT: 92 3/8"
MAX WRAP HEIGHT: 83 1/4"
OVERALL 300° OF ACCESS
CHAIN DRIVEN
VARIABLE SPEED TURN TABLE (3-12 RPM)
WITH SOFT START/STOP
FOOT CONTROL FOR TURN TABLE ROTATION
DECK IS TOUGH BAKED IN POWDER COATED
YELLOW FINISH
FRAME IS TOUGH BAKED IN POWDER COATED
BLUE FINISH

SPECIAL FEATURES

NONE

APPROVAL

I, THE UNDERSIGNED, AGREE THAT THE PRODUCT AS REPRESENTED SATISFIES DESIGN AND DIMENSION REQUIREMENTS. I ALSO ACKNOWLEDGE MY DUTY TO CONFIRM PRODUCT AND INSTALLATION COMPLIANCE WITH ALL APPLICABLE FEDERAL, STATE AND LOCAL REGULATIONS AND STANDARDS.
UNITS REQUIRING APPROVAL DRAWINGS OR MODIFIED ARE NON-RETURNABLE
[] As drawn [] As marked

Signed: _____ Date: _____
Printed Name: _____

LEAD TIME WILL START UPON RECEIPT OF SIGNED APPROVAL DRAWING

DISTRIBUTOR'S NAME:		P.O.#
VESTIL MANUFACTURING		X
DRAWN BY: SJA		W.O.#
DATE: 2/9/2017		X
REFERENCE: X	SCALE: 1:40	SALES: X
QUOTED LEAD TIME: X	QUOTE #	FILE NAME:
	X	20-007-188